

Sales and Inventory Report
Category - Residential
Statistics for Entire MLS from 1/1/2007 - 12/31/2010

Category:1
Property Type:DET,PDT
Area:01,05,08,10,13

Month	Year	Monthly Sales	Monthly Volume	Avg List \$	Avg Sale \$	Median Sold \$	Avg DOM	Avg CDOM	% Sold/List	Current Inventory	Months Inventory
January	2007	103	\$39,318,843	\$396,968	\$381,736	\$330,000	109	109	96.16%	1362	13.22
February	2007	119	\$40,872,085	\$352,261	\$343,462	\$295,000	110	110	97.50%	1395	11.72
March	2007	171	\$61,398,708	\$372,433	\$359,056	\$304,900	95	95	96.40%	1511	8.83
April	2007	180	\$73,777,080	\$423,034	\$409,872	\$361,250	97	97	96.88%	1679	9.32
May	2007	239	\$95,521,545	\$411,721	\$399,671	\$320,000	76	76	97.07%	1796	7.51
June	2007	281	\$114,889,252	\$420,537	\$408,858	\$349,000	73	73	97.22%	1853	6.59
July	2007	212	\$84,801,765	\$415,574	\$400,008	\$332,500	81	81	96.25%	1858	8.76
August	2007	222	\$97,896,700	\$456,090	\$440,976	\$342,950	86	86	96.68%	1813	8.16
September	2007	112	\$42,916,207	\$399,872	\$383,180	\$316,500	102	102	95.82%	1829	16.33
October	2007	143	\$63,174,651	\$462,350	\$441,780	\$352,000	102	106	95.55%	1817	12.70
November	2007	125	\$45,842,787	\$384,010	\$366,742	\$297,500	95	110	95.50%	1757	14.05
December	2007	109	\$46,365,678	\$440,211	\$425,373	\$370,000	120	137	96.62%	1689	15.49
Annual:		2016	\$806,775,301	\$414,410	\$400,186	\$330,000	91	93	96.56%	1697	10.10

Month	Year	Monthly Sales	Monthly Volume	Avg List \$	Avg Sale \$	Median Sold \$	Avg DOM	Avg CDOM	% Sold/List	Current Inventory	Months Inventory
January	2008	102	\$41,460,731	\$428,808	\$406,477	\$326,000	114	133	94.79%	1613	15.81
February	2008	110	\$44,327,206	\$426,280	\$402,974	\$306,000	146	161	94.53%	1677	15.24
March	2008	118	\$40,262,490	\$356,831	\$341,207	\$300,000	122	137	95.62%	1758	14.89
April	2008	139	\$51,555,115	\$389,800	\$370,900	\$317,000	119	133	95.15%	1852	13.32
May	2008	178	\$66,571,354	\$396,444	\$373,996	\$312,750	114	129	94.33%	1894	10.64
June	2008	222	\$92,068,262	\$448,061	\$414,721	\$310,220	105	122	92.55%	1917	8.63
July	2008	199	\$97,348,483	\$507,637	\$489,188	\$321,000	113	135	96.36%	1884	9.46
August	2008	153	\$78,451,055	\$551,948	\$512,751	\$352,500	108	142	92.89%	1875	12.25
September	2008	121	\$45,708,884	\$395,752	\$377,759	\$305,000	111	144	95.45%	1856	15.33
October	2008	113	\$46,577,397	\$444,209	\$412,189	\$329,000	119	147	92.79%	1850	16.37
November	2008	71	\$33,057,756	\$500,663	\$465,602	\$320,000	113	151	92.99%	1833	25.81
December	2008	91	\$41,654,611	\$492,894	\$457,742	\$327,000	129	170	92.86%	1742	19.14
Annual:		1617	\$679,043,344	\$445,828	\$419,940	\$316,987	116	139	94.19%	1813	13.45

Month	Year	Monthly Sales	Monthly Volume	Avg List \$	Avg Sale \$	Median Sold \$	Avg DOM	Avg CDOM	% Sold/List	Current Inventory	Months Inventory
January	2009	48	\$18,217,915	\$395,265	\$379,539	\$325,088	105	140	96.02%	1641	34.18
February	2009	71	\$30,131,850	\$452,143	\$424,392	\$277,000	153	166	93.86%	1684	23.71
March	2009	97	\$39,975,658	\$435,642	\$412,120	\$290,000	128	151	94.60%	1769	18.23
April	2009	108	\$39,025,088	\$392,757	\$361,343	\$239,500	131	160	92.00%	1879	17.39
May	2009	136	\$52,253,730	\$407,016	\$384,218	\$313,000	121	165	94.39%	1969	14.47
June	2009	175	\$58,418,797	\$349,654	\$333,821	\$275,000	105	139	95.47%	1935	11.05
July	2009	213	\$84,751,841	\$430,920	\$397,895	\$307,000	114	141	92.33%	1917	9.00
August	2009	151	\$57,648,420	\$403,167	\$381,777	\$316,000	101	143	94.69%	1875	12.41
September	2009	131	\$43,370,532	\$346,654	\$331,072	\$309,500	105	134	95.50%	1827	13.94
October	2009	118	\$41,616,032	\$383,227	\$352,678	\$248,000	115	156	92.02%	1827	15.48
November	2009	146	\$48,490,821	\$345,350	\$332,128	\$286,000	130	170	96.17%	1781	12.19
December	2009	116	\$55,040,857	\$507,509	\$474,490	\$288,816	105	138	93.49%	1671	14.40
Annual:		1510	\$568,941,541	\$400,584	\$376,782	\$290,945	116	149	94.05%	1815	14.42

Month	Year	Monthly Sales	Monthly Volume	Avg List \$	Avg Sale \$	Median Sold \$	Avg DOM	Avg CDOM	% Sold/List	Current Inventory	Months Inventory
January	2010	79	\$23,087,093	\$306,554	\$292,241	\$235,000	108	159	95.33%	1534	19.41
February	2010	82	\$29,687,214	\$387,890	\$362,039	\$304,499	142	203	93.33%	1620	19.75
March	2010	101	\$38,049,347	\$402,009	\$376,726	\$305,000	143	170	93.71%	1727	17.09
April	2010	147	\$55,915,142	\$402,690	\$380,375	\$305,000	137	178	94.45%	1940	13.19
May	2010	180	\$57,721,140	\$334,537	\$320,673	\$289,750	106	138	95.85%	2071	11.50
June	2010	249	\$92,229,231	\$383,741	\$370,398	\$303,000	88	117	96.52%	2109	8.46
July	2010	135	\$52,990,156	\$409,847	\$392,519	\$309,035	104	142	95.77%	2101	15.56
August	2010	139	\$47,251,951	\$357,531	\$339,942	\$279,900	100	141	95.08%	2069	14.88
September	2010	124	\$41,359,924	\$352,498	\$333,547	\$271,977	95	114	94.62%	2036	16.41
October	2010	111	\$50,659,851	\$475,682	\$456,395	\$285,000	101	154	95.94%	1969	17.73
November	2010	133	\$52,983,596	\$432,678	\$398,372	\$275,000	116	147	92.07%	1865	14.02
December	2010	116	\$37,626,521	\$346,948	\$324,366	\$265,885	126	161	93.49%	1738	14.98
Annual:		1596	\$579,561,166	\$382,782	\$363,133	\$290,000	111	147	94.86%	1898	14.27

Annual:	2007 - 2010	6739	\$2,634,321,352	\$411,360	\$390,906	\$307,900	107	130	95.02%	1806	12.86
----------------	--------------------	-------------	------------------------	------------------	------------------	------------------	------------	------------	---------------	-------------	--------------

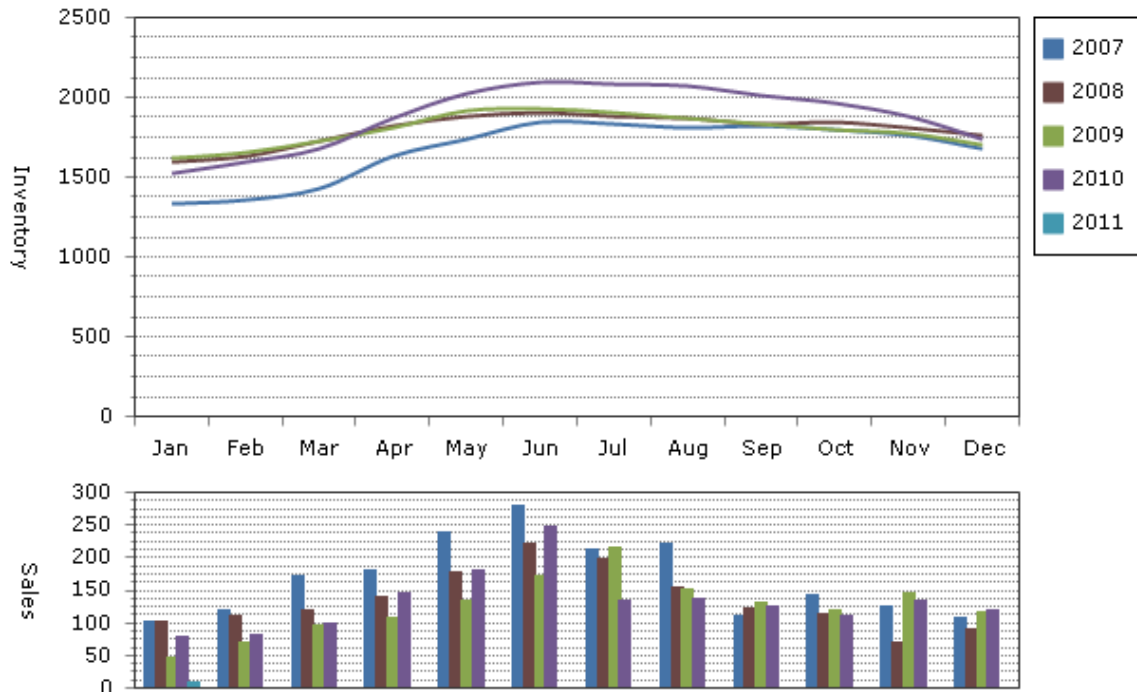
Note: The "Current Inventory" column(s) reflect the number of active(on market) listings on the 8th day of each month.

The "Months Inventory" column(s) value(s) equal "Current Inventory" divided by "Monthly Sales".

This reflects how many months it would take to sell out of inventory at the current month's rate of sale.

- Total Months Inventory = Total Current Inventory / (Total Monthly Sales/12 Months)

Sales and Inventory: 1/1/2007 - 12/31/2010



--Information on this report is not guaranteed. There is no express or implied warranty by MLS of the accuracy of information which should be independently verified.--

Copyright: 2011 by the Charlottesville Area Association of REALTORS®.
Jim Duncan - www.RealCentralVA.com - 434-242-7140

Prepared by JIM DUNCAN of NEST REALTY GROUP on Sunday, January 09, 2011 8:05 AM.