

Sales and Inventory Report
Category - Residential
Statistics for Entire MLS from 1/1/2006 - 12/31/2009

Category:1
Property Type:DET,PDT
Area:01,05,08,10,13

Month	Year	Monthly Sales	Monthly Volume	Avg List \$	Avg Sale \$	Median Sold \$	Avg DOM	Avg CDOM	% Sold/List	Current Inventory	Months Inventory
January	2006	151	\$61,901,347	\$424,400	\$409,942	\$328,400	84	84	96.59%	1063	7.03
February	2006	156	\$69,562,748	\$454,904	\$445,915	\$344,950	77	77	98.02%	1187	7.60
March	2006	190	\$74,710,306	\$400,105	\$393,212	\$343,200	82	82	98.27%	1330	7.00
April	2006	202	\$73,883,771	\$372,985	\$365,761	\$292,000	82	82	98.06%	1461	7.23
May	2006	265	\$98,026,070	\$372,987	\$369,909	\$309,000	67	67	99.17%	1584	5.97
June	2006	322	\$128,142,133	\$405,198	\$397,956	\$325,000	56	56	98.21%	1654	5.13
July	2006	241	\$90,859,254	\$383,462	\$377,009	\$320,000	66	66	98.31%	1651	6.85
August	2006	241	\$106,244,221	\$456,506	\$440,847	\$325,000	76	76	96.56%	1648	6.83
September	2006	153	\$75,292,750	\$501,894	\$492,109	\$325,000	82	82	98.05%	1713	11.19
October	2006	160	\$63,740,215	\$415,361	\$398,376	\$319,950	89	89	95.91%	1649	10.30
November	2006	169	\$83,664,136	\$518,845	\$495,054	\$370,000	97	97	95.41%	1537	9.09
December	2006	140	\$65,373,669	\$490,873	\$466,954	\$345,000	94	94	95.12%	1428	10.20
Annual:		2390	\$991,400,620	\$425,864	\$414,811	\$325,000	77	77	97.40%	1492	7.49

Month	Year	Monthly Sales	Monthly Volume	Avg List \$	Avg Sale \$	Median Sold \$	Avg DOM	Avg CDOM	% Sold/List	Current Inventory	Months Inventory
January	2007	103	\$39,318,843	\$396,968	\$381,736	\$330,000	109	109	96.16%	1360	13.20
February	2007	119	\$40,872,085	\$352,261	\$343,462	\$295,000	110	110	97.50%	1427	11.99
March	2007	171	\$61,398,708	\$372,433	\$359,056	\$304,900	95	95	96.40%	1568	9.16
April	2007	180	\$73,777,080	\$423,034	\$409,872	\$361,250	97	97	96.88%	1719	9.55
May	2007	239	\$95,521,545	\$411,721	\$399,671	\$320,000	76	76	97.07%	1820	7.61
June	2007	281	\$114,889,252	\$420,537	\$408,858	\$349,000	73	73	97.22%	1856	6.60
July	2007	212	\$84,801,765	\$415,574	\$400,008	\$332,500	81	81	96.25%	1836	8.66
August	2007	222	\$97,896,700	\$456,090	\$440,976	\$342,950	86	86	96.68%	1823	8.21
September	2007	112	\$42,916,207	\$399,872	\$383,180	\$316,500	102	102	95.82%	1837	16.40
October	2007	143	\$63,174,651	\$462,350	\$441,780	\$352,000	102	106	95.55%	1799	12.58
November	2007	125	\$45,842,787	\$384,010	\$366,742	\$297,500	95	110	95.50%	1737	13.89
December	2007	109	\$46,365,678	\$440,211	\$425,373	\$370,000	120	137	96.62%	1674	15.35
Annual:		2016	\$806,775,301	\$414,410	\$400,186	\$330,000	91	93	96.56%	1705	10.14

Month	Year	Monthly Sales	Monthly Volume	Avg List \$	Avg Sale \$	Median Sold \$	Avg DOM	Avg CDOM	% Sold/List	Current Inventory	Months Inventory
January	2008	102	\$41,460,731	\$428,808	\$406,477	\$326,000	114	133	94.79%	1622	15.90
February	2008	110	\$44,327,206	\$426,280	\$402,974	\$306,000	146	161	94.53%	1702	15.47
March	2008	118	\$40,262,490	\$356,831	\$341,207	\$300,000	122	137	95.62%	1791	15.17
April	2008	139	\$51,555,115	\$389,800	\$370,900	\$317,000	119	133	95.15%	1888	13.58
May	2008	178	\$66,571,354	\$396,444	\$373,996	\$312,750	114	129	94.33%	1878	10.55
June	2008	222	\$92,068,262	\$448,061	\$414,721	\$310,220	105	122	92.55%	1901	8.56
July	2008	199	\$97,348,483	\$507,637	\$489,188	\$321,000	113	135	96.36%	1884	9.46
August	2008	153	\$78,451,055	\$551,948	\$512,751	\$352,500	108	142	92.89%	1892	12.36
September	2008	121	\$45,708,884	\$395,752	\$377,759	\$305,000	111	144	95.45%	1854	15.32
October	2008	113	\$46,577,397	\$444,209	\$412,189	\$329,000	119	147	92.79%	1863	16.48
November	2008	71	\$33,057,756	\$500,663	\$465,602	\$320,000	113	151	92.99%	1817	25.59
December	2008	91	\$41,654,611	\$492,894	\$457,742	\$327,000	129	170	92.86%	1735	19.06
Annual:		1617	\$679,043,344	\$445,828	\$419,940	\$316,987	116	139	94.19%	1819	13.49

Month	Year	Monthly Sales	Monthly Volume	Avg List \$	Avg Sale \$	Median Sold \$	Avg DOM	Avg CDOM	% Sold/List	Current Inventory	Months Inventory
January	2009	48	\$18,217,915	\$395,265	\$379,539	\$325,088	105	140	96.02%	1642	34.20
February	2009	71	\$30,131,850	\$452,143	\$424,392	\$277,000	153	166	93.86%	1698	23.91
March	2009	97	\$39,975,658	\$435,642	\$412,120	\$290,000	128	151	94.60%	1775	18.29
April	2009	108	\$39,025,088	\$392,757	\$361,343	\$239,500	131	160	92.00%	1903	17.62
May	2009	136	\$52,253,730	\$407,016	\$384,218	\$313,000	121	165	94.39%	1979	14.55
June	2009	175	\$58,418,797	\$349,654	\$333,821	\$275,000	105	139	95.47%	1935	11.05
July	2009	213	\$84,751,841	\$430,920	\$397,895	\$307,000	114	141	92.33%	1899	8.91
August	2009	151	\$57,648,420	\$403,167	\$381,777	\$316,000	101	143	94.69%	1884	12.47
September	2009	131	\$43,370,532	\$346,654	\$331,072	\$309,500	105	134	95.50%	1834	14.00
October	2009	118	\$41,616,032	\$383,227	\$352,678	\$248,000	115	156	92.02%	1821	15.43
November	2009	146	\$48,490,821	\$345,350	\$332,128	\$286,000	130	170	96.17%	1764	12.08
December	2009	116	\$55,040,857	\$507,509	\$474,490	\$288,816	105	138	93.49%	1659	14.30
Annual:		1510	\$568,941,541	\$400,584	\$376,782	\$290,945	116	149	94.05%	1816	14.43

Annual:	2006 - 2009	7533	\$3,046,160,806	\$422,017	\$404,375	\$318,000	97	109	95.81%	1708	10.88
---------	-------------	------	-----------------	-----------	-----------	-----------	----	-----	--------	------	-------

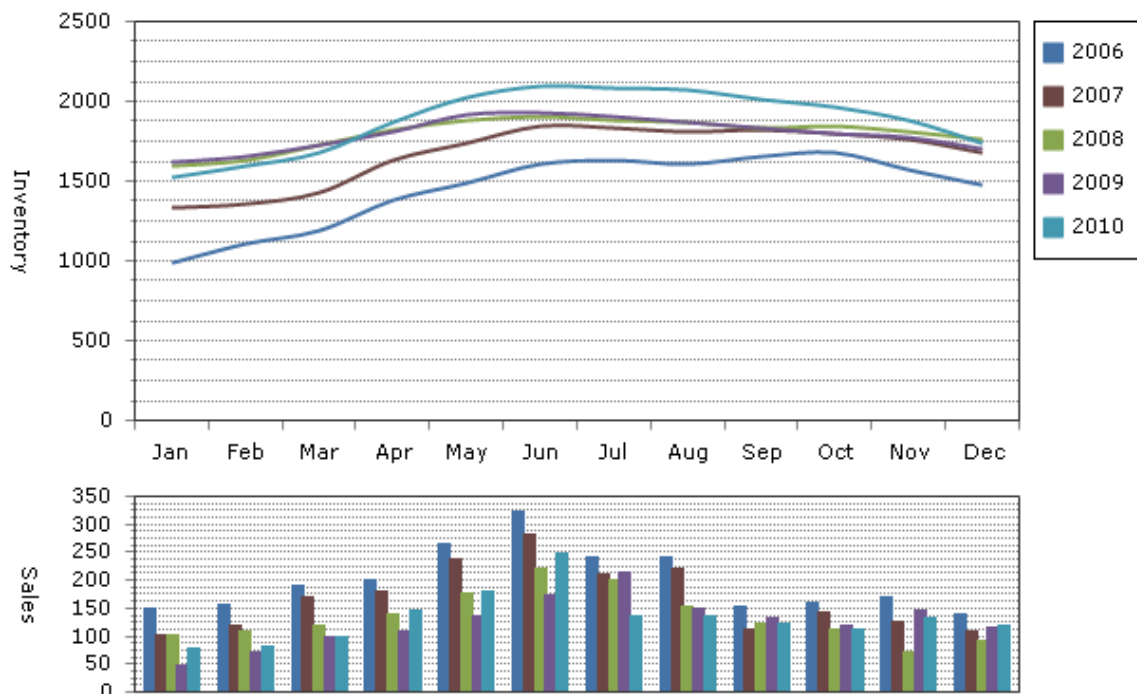
Note: The "Current Inventory" column(s) reflect the number of active(on market) listings on the 16th day of each month.

The "Months Inventory" column(s) value(s) equal "Current Inventory" divided by "Monthly Sales".

This reflects how many months it would take to sell out of inventory at the current month's rate of sale.

- Total Months Inventory = Total Current Inventory / (Total Monthly Sales/12 Months)

Sales and Inventory: 1/1/2006 - 12/31/2009



--Information on this report is not guaranteed. There is no express or implied warranty by MLS of the accuracy of information which should be independently verified.--

Copyright: 2011 by the Charlottesville Area Association of REALTORS®.

Jim Duncan - www.RealCentralVA.com - 434-242-7140

Prepared by JIM DUNCAN of NEST REALTY GROUP on Sunday, January 09, 2011 7:27 AM.