

Sales and Inventory Report
Category - Residential
Statistics for Entire MLS from 6/1/2007 - 5/31/2011

Category:1
Property Type:DET
Area:01,05,08,10,13

Month	Year	Monthly Sales	Monthly Volume	Avg List \$	Avg Sale \$	Median Sold \$	Avg DOM	Avg CDOM	% Sold/List	Current Inventory	Months Inventory
June	2007	281	\$114,889,252	\$420,537	\$408,858	\$349,000	73	73	97.22%	1852	6.59
July	2007	212	\$84,801,765	\$415,574	\$400,008	\$332,500	81	81	96.25%	1832	8.64
August	2007	222	\$97,896,700	\$456,090	\$440,976	\$342,950	86	86	96.68%	1816	8.18
September	2007	112	\$42,916,207	\$399,872	\$383,180	\$316,500	102	102	95.82%	1828	16.32
October	2007	143	\$63,174,651	\$462,350	\$441,780	\$352,000	102	106	95.55%	1787	12.49
November	2007	125	\$45,842,787	\$384,010	\$366,742	\$297,500	95	110	95.50%	1725	13.80
December	2007	109	\$46,365,678	\$440,211	\$425,373	\$370,000	120	137	96.62%	1660	15.22
January	2008	102	\$41,460,731	\$428,808	\$406,477	\$326,000	114	133	94.79%	1608	15.76
February	2008	110	\$44,327,206	\$426,280	\$402,974	\$306,000	146	161	94.53%	1687	15.33
March	2008	118	\$40,262,490	\$356,831	\$341,207	\$300,000	122	137	95.62%	1776	15.05
April	2008	139	\$51,555,115	\$389,800	\$370,900	\$317,000	119	133	95.15%	1870	13.45
May	2008	178	\$66,571,354	\$396,444	\$373,996	\$312,750	114	129	94.33%	1858	10.43
Annual:		1851	\$740,063,936	\$417,015	\$399,818	\$329,900	101	108	95.87%	1775	11.50

Month	Year	Monthly Sales	Monthly Volume	Avg List \$	Avg Sale \$	Median Sold \$	Avg DOM	Avg CDOM	% Sold/List	Current Inventory	Months Inventory
June	2008	222	\$92,068,262	\$448,061	\$414,721	\$310,220	105	122	92.55%	1878	8.45
July	2008	199	\$97,348,483	\$507,637	\$489,188	\$321,000	113	135	96.36%	1857	9.33
August	2008	153	\$78,451,055	\$551,948	\$512,751	\$352,500	108	142	92.89%	1863	12.17
September	2008	121	\$45,708,884	\$395,752	\$377,759	\$305,000	111	144	95.45%	1822	15.05
October	2008	113	\$46,577,397	\$444,209	\$412,189	\$329,000	119	147	92.79%	1828	16.17
November	2008	71	\$33,057,756	\$500,663	\$465,602	\$320,000	113	151	92.99%	1777	25.02
December	2008	91	\$41,654,611	\$492,894	\$457,742	\$327,000	129	170	92.86%	1686	18.52
January	2009	48	\$18,217,915	\$395,265	\$379,539	\$325,088	105	140	96.02%	1587	33.06
February	2009	71	\$30,131,850	\$452,143	\$424,392	\$277,000	153	166	93.86%	1595	22.46
March	2009	97	\$39,975,658	\$435,642	\$412,120	\$290,000	128	151	94.60%	1654	17.05
April	2009	108	\$39,025,088	\$392,757	\$361,343	\$239,500	131	160	92.00%	1766	16.35
May	2009	136	\$52,253,730	\$407,016	\$384,218	\$313,000	121	165	94.39%	1850	13.60
Annual:		1430	\$614,470,689	\$457,709	\$429,699	\$307,382	117	146	93.88%	1764	14.80

Month	Year	Monthly Sales	Monthly Volume	Avg List \$	Avg Sale \$	Median Sold \$	Avg DOM	Avg CDOM	% Sold/List	Current Inventory	Months Inventory
June	2009	175	\$58,418,797	\$349,654	\$333,821	\$275,000	105	139	95.47%	1804	10.30
July	2009	213	\$84,751,841	\$430,920	\$397,895	\$307,000	114	141	92.33%	1764	8.28
August	2009	151	\$57,648,420	\$403,167	\$381,777	\$316,000	101	143	94.69%	1727	11.43
September	2009	131	\$43,370,532	\$346,654	\$331,072	\$309,500	105	134	95.50%	1665	12.70
October	2009	118	\$41,616,032	\$383,227	\$352,678	\$248,000	115	156	92.02%	1629	13.80
November	2009	144	\$47,986,021	\$346,641	\$333,236	\$291,000	132	173	96.13%	1554	10.79
December	2009	114	\$54,226,293	\$509,527	\$475,669	\$288,091	107	138	93.35%	1447	12.69
January	2010	79	\$23,087,093	\$306,554	\$292,241	\$235,000	108	159	95.33%	1375	17.40
February	2010	82	\$29,687,214	\$387,890	\$362,039	\$304,499	142	203	93.33%	1454	17.73
March	2010	101	\$38,049,347	\$402,009	\$376,726	\$305,000	143	170	93.71%	1569	15.53
April	2010	148	\$56,063,142	\$400,982	\$378,805	\$305,000	137	178	94.46%	1807	12.20
May	2010	180	\$57,721,140	\$334,537	\$320,673	\$289,750	106	138	95.85%	1840	10.22
Annual:		1636	\$592,625,872	\$384,278	\$362,240	\$295,000	116	153	94.26%	1636	12.00

Month	Year	Monthly Sales	Monthly Volume	Avg List \$	Avg Sale \$	Median Sold \$	Avg DOM	Avg CDOM	% Sold/List	Current Inventory	Months Inventory
June	2010	249	\$92,229,231	\$383,741	\$370,398	\$303,000	88	117	96.52%	1876	7.53
July	2010	135	\$52,990,156	\$409,847	\$392,519	\$309,035	104	142	95.77%	1872	13.86
August	2010	140	\$47,643,951	\$357,834	\$340,313	\$282,450	99	141	95.10%	1821	13.00
September	2010	124	\$41,364,924	\$352,498	\$333,588	\$271,977	95	114	94.63%	1802	14.53
October	2010	110	\$49,784,851	\$471,870	\$452,589	\$285,000	102	155	95.91%	1723	15.66
November	2010	135	\$53,366,596	\$429,290	\$395,308	\$270,065	114	149	92.08%	1589	11.77
December	2010	126	\$45,450,521	\$386,132	\$360,718	\$257,500	132	164	93.41%	1466	11.63
January	2011	94	\$38,124,373	\$440,190	\$405,578	\$285,995	125	158	92.13%	1359	14.45
February	2011	85	\$25,768,837	\$322,270	\$303,162	\$268,000	122	178	94.07%	1399	16.45
March	2011	109	\$35,905,758	\$346,979	\$329,410	\$265,000	151	182	94.93%	1521	13.95
April	2011	166	\$65,957,628	\$416,185	\$397,335	\$284,452	142	181	95.47%	1679	10.11
May	2011	145	\$46,904,050	\$340,142	\$323,476	\$275,000	105	134	95.10%	1810	12.48
Annual:		1618	\$595,490,876	\$388,256	\$368,041	\$284,702	113	148	94.79%	1660	12.31

Annual:	2007 - 2011	6535	\$2,542,651,373	\$410,604	\$389,082	\$301,900	111	138	94.75%	1709	12.55
----------------	--------------------	-------------	------------------------	------------------	------------------	------------------	------------	------------	---------------	-------------	--------------

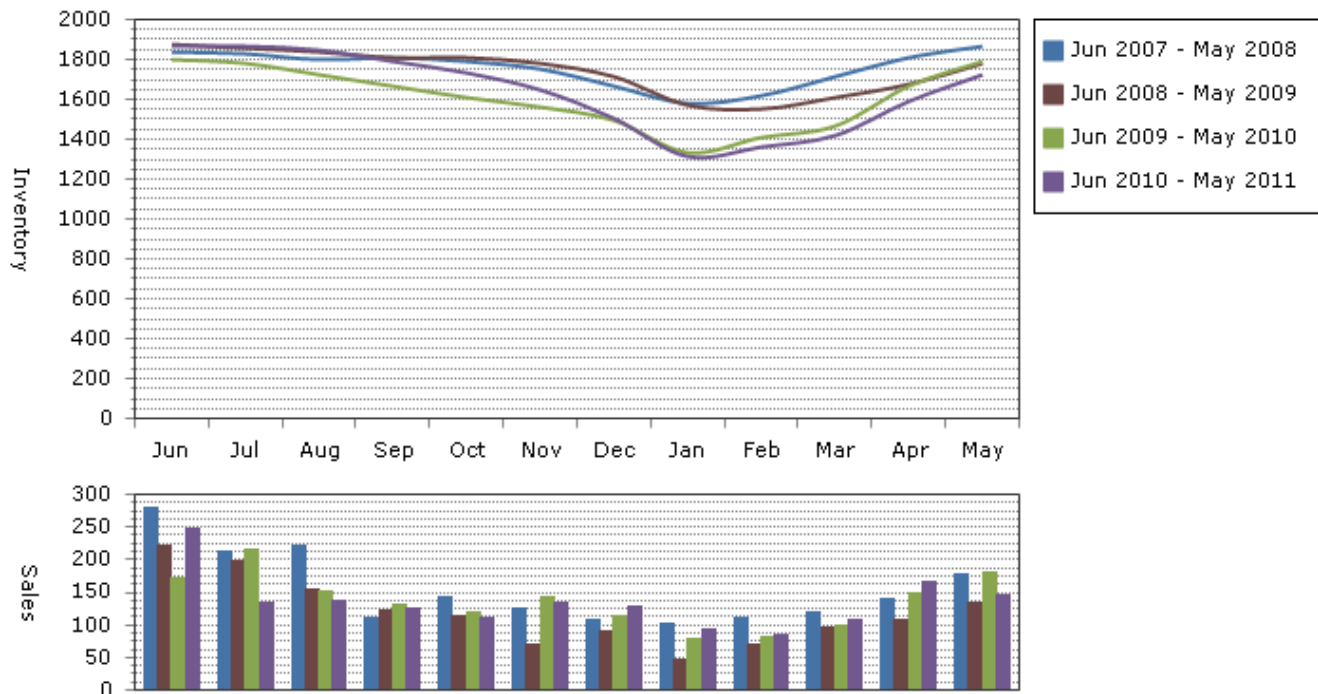
Note: The "Current Inventory" column(s) reflect the number of active(on market) listings on the 16th day of each month.

The "Months Inventory" column(s) value(s) equal "Current Inventory" divided by "Monthly Sales".

This reflects how many months it would take to sell out of inventory at the current month's rate of sale.

- Total Months Inventory = Total Current Inventory / (Total Monthly Sales/12 Months)

Sales and Inventory: 6/1/2007 - 5/31/2011



--Information on this report is not guaranteed. There is no express or implied warranty by MLS of the accuracy of information which should be independently verified.--

Copyright: 2011 by the Charlottesville Area Association of REALTORS®.
Jim Duncan - www.RealCentralVA.com - 434-242-7140

Prepared by JIM DUNCAN of NEST REALTY GROUP on Monday, June 06, 2011 6:56 AM.