

Sales and Inventory Report
Category - Residential
Statistics for Entire MLS from 8/1/2008 - 7/31/2012

Category:1
 Area:10

Month	Year	Monthly Sales	Monthly Volume	Avg List \$	Avg Sale \$	Median Sold \$	Avg DOM	Avg CDOM	% Sold/List	Current Inventory	Months Inventory
August	2008	9	\$2,480,340	\$285,385	\$275,593	\$294,500	140	151	96.56%	238	26.44
September	2008	15	\$3,918,900	\$273,119	\$261,260	\$245,500	89	124	95.65%	233	15.53
October	2008	13	\$3,283,000	\$269,780	\$252,538	\$258,000	194	259	93.60%	235	18.07
November	2008	9	\$2,475,479	\$286,654	\$275,053	\$213,750	108	118	95.95%	238	26.44
December	2008	7	\$1,643,500	\$252,028	\$234,785	\$231,500	70	92	93.15%	239	34.14
January	2009	6	\$2,112,834	\$340,643	\$352,139	\$336,864	25	74	103.37%	235	39.16
February	2009	4	\$778,000	\$202,350	\$194,500	\$218,000	161	227	96.12%	234	58.50
March	2009	12	\$3,213,400	\$280,165	\$267,783	\$278,500	86	114	95.58%	232	19.33
April	2009	15	\$3,921,980	\$263,185	\$261,465	\$225,000	117	139	99.34%	240	16.00
May	2009	14	\$4,033,990	\$287,725	\$288,142	\$288,417	72	110	100.14%	250	17.85
June	2009	27	\$6,417,290	\$242,280	\$237,677	\$217,000	95	120	98.10%	247	9.14
July	2009	20	\$5,371,635	\$274,963	\$268,581	\$270,120	113	143	97.67%	234	11.70
Annual:		151	\$39,650,348	\$269,857	\$262,585	\$253,000	106	137	97.30%	238	18.91

Month	Year	Monthly Sales	Monthly Volume	Avg List \$	Avg Sale \$	Median Sold \$	Avg DOM	Avg CDOM	% Sold/List	Current Inventory	Months Inventory
August	2009	20	\$5,361,955	\$273,594	\$268,097	\$252,500	75	129	97.99%	246	12.30
September	2009	19	\$4,299,632	\$227,711	\$226,296	\$250,000	110	123	99.37%	230	12.10
October	2009	22	\$5,408,566	\$254,408	\$245,843	\$199,950	128	172	96.63%	220	10.00
November	2009	16	\$4,606,501	\$283,204	\$287,906	\$300,000	97	143	101.66%	227	14.18
December	2009	16	\$3,353,100	\$215,900	\$209,568	\$186,750	74	92	97.06%	217	13.56
January	2010	8	\$2,014,038	\$248,673	\$251,754	\$252,000	104	124	101.23%	188	23.50
February	2010	10	\$2,744,065	\$283,729	\$274,406	\$261,450	111	246	96.71%	196	19.60
March	2010	14	\$4,627,550	\$341,350	\$330,539	\$283,000	157	162	96.83%	213	15.21
April	2010	20	\$5,038,380	\$256,485	\$251,919	\$237,000	149	169	98.21%	244	12.20
May	2010	21	\$6,257,101	\$314,578	\$297,957	\$229,000	77	68	94.71%	236	11.23
June	2010	28	\$8,001,634	\$289,706	\$285,772	\$267,500	107	122	98.64%	251	8.96
July	2010	14	\$3,679,375	\$258,324	\$262,812	\$261,500	41	90	101.73%	260	18.57
Annual:		208	\$55,391,897	\$271,398	\$266,307	\$245,000	103	133	98.12%	227	13.09

Month	Year	Monthly Sales	Monthly Volume	Avg List \$	Avg Sale \$	Median Sold \$	Avg DOM	Avg CDOM	% Sold/List	Current Inventory	Months Inventory
August	2010	18	\$4,618,195	\$267,275	\$256,566	\$248,500	67	93	95.99%	247	13.72
September	2010	21	\$5,083,438	\$243,649	\$242,068	\$255,000	100	67	99.35%	255	12.14
October	2010	18	\$4,650,065	\$273,283	\$258,336	\$239,732	59	78	94.53%	240	13.33
November	2010	23	\$5,341,795	\$237,297	\$232,251	\$220,000	91	159	97.87%	233	10.13
December	2010	15	\$3,326,030	\$222,098	\$221,735	\$224,000	91	99	99.83%	227	15.13
January	2011	8	\$1,832,105	\$225,547	\$229,013	\$210,000	146	197	101.53%	217	27.12
February	2011	13	\$2,988,310	\$232,891	\$229,870	\$249,900	90	130	98.70%	216	16.61
March	2011	17	\$4,339,695	\$266,332	\$255,276	\$257,215	134	139	95.84%	222	13.05
April	2011	16	\$3,551,210	\$228,785	\$221,950	\$244,000	119	139	97.01%	220	13.75
May	2011	21	\$5,222,202	\$244,231	\$248,676	\$260,000	67	146	101.81%	242	11.52
June	2011	30	\$7,207,641	\$241,930	\$240,254	\$220,000	117	136	99.30%	242	8.06
July	2011	19	\$4,117,087	\$223,304	\$216,688	\$206,426	98	104	97.03%	231	12.15
Annual:		219	\$52,277,773	\$243,313	\$238,711	\$234,000	96	122	98.10%	233	12.76

Month	Year	Monthly Sales	Monthly Volume	Avg List \$	Avg Sale \$	Median Sold \$	Avg DOM	Avg CDOM	% Sold/List	Current Inventory	Months Inventory
August	2011	19	\$4,499,920	\$238,140	\$236,837	\$233,000	75	75	99.45%	224	11.78
September	2011	19	\$4,266,868	\$216,523	\$224,572	\$260,000	75	75	103.71%	218	11.47
October	2011	10	\$2,587,793	\$259,270	\$258,779	\$253,450	152	216	99.81%	217	21.70
November	2011	15	\$7,100,483	\$476,270	\$473,365	\$300,318	85	96	99.39%	206	13.73
December	2011	18	\$3,502,317	\$204,671	\$194,573	\$179,500	112	126	95.06%	182	10.11
January	2012	19	\$3,031,150	\$168,821	\$159,534	\$156,000	98	158	94.49%	172	9.05
February	2012	12	\$2,561,435	\$226,741	\$213,452	\$196,700	110	154	94.13%	177	14.75

March	2012	19	\$4,580,490	\$248,532	\$241,078	\$257,000	106	140	97.00%	184	9.68
April	2012	13	\$2,550,585	\$198,243	\$196,198	\$169,900	128	171	98.96%	196	15.07
May	2012	17	\$3,833,607	\$227,599	\$225,506	\$255,000	75	70	99.08%	211	12.41
June	2012	15	\$4,136,726	\$280,338	\$275,781	\$272,000	188	216	98.37%	213	14.20
July	2012	11	\$3,280,746	\$304,356	\$298,249	\$269,000	111	111	97.99%	219	19.90
Annual:		187	\$45,932,120	\$249,783	\$245,626	\$225,000	106	129	98.33%	202	12.96

Annual:	2008 - 2012	765	\$193,252,138	\$257,770	\$252,617	\$238,000	102	130	98.00%	225	14.11
----------------	--------------------	------------	----------------------	------------------	------------------	------------------	------------	------------	---------------	------------	--------------

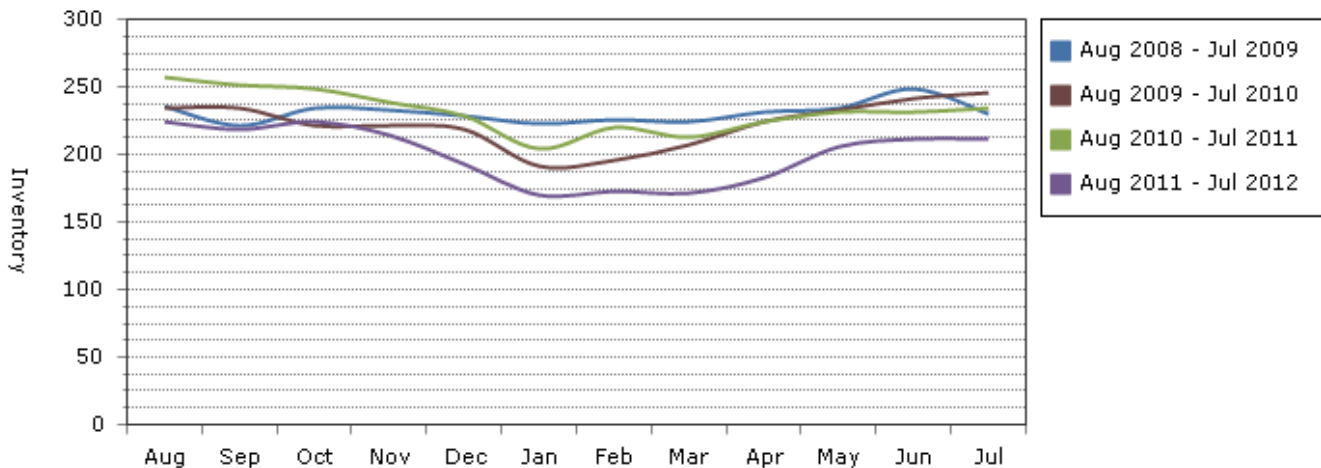
Note: The "Current Inventory" column(s) reflect the number of active(on market) listings on the 16th day of each month.

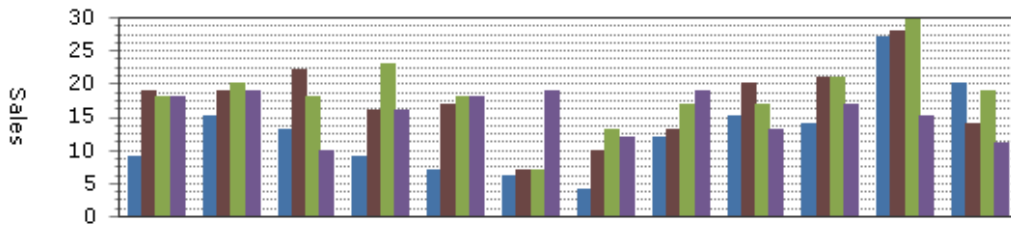
The "Months Inventory" column(s) value(s) equal "Current Inventory" divided by "Monthly Sales".

This reflects how many months it would take to sell out of inventory at the current month's rate of sale.

- Total Months Inventory = Total Current Inventory / (Total Monthly Sales/12 Months)

Sales and Inventory: 8/1/2008 - 7/31/2012





--Information on this report is not guaranteed. There is no express or implied warranty by MLS of the accuracy of information which should be independently verified.--

Copyright: 2012 by the Charlottesville Area Association of REALTORS®.

Jim Duncan - www.RealCentralVA.com - 434-242-7140

Prepared by JIM DUNCAN of NEST REALTY GROUP on Tuesday, August 07, 2012 3:29 PM.